

# HFF WOMEN'S EMPPOWERMENT GROUP



HAVE YOU HEARD OF

## THE GIRL EFFECT

A STUDY CONDUCTED BY NIKE

The effect says that if we were to give both a man and a woman \$100 each in the same developing community, \$90 of the Woman's \$100 will go back into her family and community, whereas only \$20-\$35 of the Man's will go back into his family and community.



### WHO WE ARE

After a growing need of many vulnerable children and people that were connected to the Hoffman Family for support, Hoffman Family Foundation was founded in 2014. We are solely dedicated to providing tools and skills to help people become independent and self-sustaining.

### WHAT WE DO

We currently have five programs: Child Development, Women Empowerment, Sanitation/healthcare, School Construction and Housing. All of which are dedicated to improving the lives of these amazing people.

### OUR MISSION

Leave a *legacy of love*, by transforming communities and lives *around the world*.

## OUR TIMELINE

- SEPTEMBER 2014**
  - Ladies started their Tent & Chair Party Business
  - Rented a small warehouse building to store their products
  - Ribbon ceremony celebration
- APRIL 2015**
  - Ladies set up tents and chairs for our meeting
  - Excitement stirs as we discuss ideas for their business to expand
  - Request for HFF T-shirts during next visit
- JUNE 2016**
  - The ladies have picked up a few men to help with their projects
  - Excited to give reports on how their businesses are flourishing
  - Request for business workshops to learn and continue to grow
  - They now have at least **2 acres** of land and are growing vegetables
  - A unique strategy and selling point causes great demand for their vegetables
- JULY 2014**
  - A small group of **18 ladies** .. Given a small hand up to get them started in a business
- MARCH 2015**
  - Number of participants in the business increases to **50 ladies**
  - Ladies breaks off into two groups
  - We gifted them with one more tent and 75 new chairs
  - Business expansion for weddings, graduations, birthdays, and funerals
- SEPT 2015**
  - Group number has increased to **80 members**
  - They express they feel value that HFF believes in them
  - Each member receives a T-shirt and through tears of joy feel they belong to this group
- AUGUST 2016**
  - Workshops service provided to the ladies.
  - They have become determined to improve their businesses.

## OUR GOALS



CONTINUE TO GROW OUR WOMEN'S EMPOWERMENT GROUP



PROVIDE NEW GROUPS WITH FUNDS TO START THEIR BUSINESSES



RAISE FUNDS TO BUILD OUR GIRL'S DORMITORY



PARTNER WITH AFRIPADS TO HELP DISTRIBUTE REUSABLE MENSTRUATION PADS TO OUR WOMEN AND GIRLS



BUILD WELLS FOR OUR SCHOOL



OPEN A HEALTH CLINIC FOR THE KIDS AND COMMUNITY



GROW AWARENESS OF OUR CAUSE THROUGH FACEBOOK AND NEW WEBSITE



CREATE A COMMUNITY OF SUPPORT THROUGH DONATIONS AND PRAYER

# SUCCESS

IT ISN'T JUST ABOUT WHAT YOU ACCOMPLISH IN YOUR LIFE, IT'S ABOUT WHAT YOU INSPIRE OTHERS TO DO

## SEPTEMBER 2016 OUR NEW PROJECT

We are starting a women's empowerment group in Kirugu where our Primary School Mt. Of Olives is located

We put out an informational meeting to see who would be interested and we had **220 women** attend

These women want to be able to provide for their families, start their own businesses and help their communities thrive.

**Would you consider helping us with this endeavor?**

## HOW YOU CAN GET INVOLVED



FOLLOW US ON FACEBOOK AND SPREAD THE WORD TO YOUR FRIENDS AND FAMILY



ADD OUR ORGANIZATION AND OUR AMAZING WOMEN TO YOUR PRAYERS



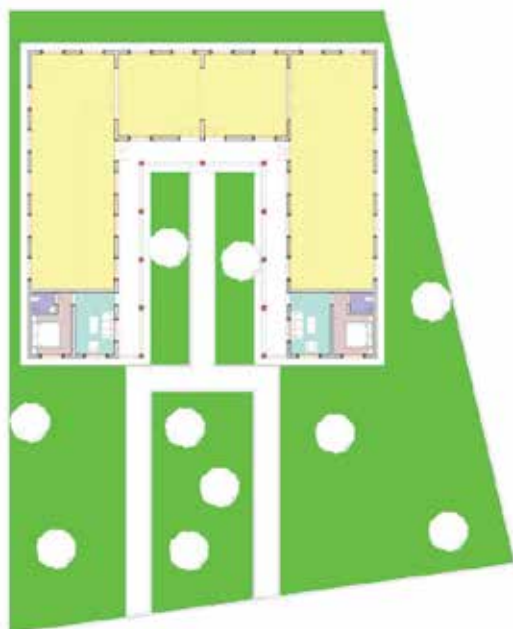
MAKE A DONATION OR SIGN UP TO HELP WITH MONTHLY CONTRIBUTIONS THAT ARE TAX DEDUCTIBLE.



SUPPORT US THROUGH YOUR BUSINESS WITH ANY HOFFCO BRANDS PRODUCTS



## OUR CURRENT PROJECT



FLOOR PLAN

# GIRLS DORMITORY

Everyday, our girls have to walk miles to and from school. Many of the girls have a hard time convincing their parents that school will be more influential for their lives than helping in the garden. Other girls miss school because of the shame and embarrassment they feel when they are on their period, where as others are scared of the dark roads they have to walk on their own. We want to provide a safe haven for these girls, surrounded by constant encouragement and reminders that they are not alone and can have an incredible future than just helping in the garden.

We need to raise \$48,000 to complete this project that will help ensure these girl's futures.

**Would you consider helping us build this dormitory?**

# \$48,000

## BENEFITS

- No longer have to walk home in the dark
- Surrounded by a community for safety and support
- Guaranteed attendance to school
- Have shelter, a bed, food, water and their own living area
- Solidify relationships with girls their age
- Establish confidence and worth within these girls



# BE THE DIFFERENCE

HELPING OTHERS IN NEED IS NOT ONLY  
A RESPONSIBILITY OF LIFE;  
IT IS WHAT *GIVES MEANING TO LIFE*

HFF WOMEN'S  
**EMPOWERMENT**  
♀  
GROUP